

SHOCK MOUNTS/ANTI-VIBRATION MOUNTS



- Minimises the effect of vibration
- Plated steels for maximum protection
- Ease of assembly
- Suitable for industry standard load cells
- Upto 2 tonnes

ADN Pesage Shock Fit kits enable successful weighing even when a silo is subjected to external forces such as vibration. Available in capacities 20 to 250kg for model 355 and 500 to 2000kg for model 3510 load cells.

Base plate, mounting Plate and bolts are optional extras.

Model 220 available in capacities 5 to 30 tonne is ideal for use in steel or concrete weighbridge applications when used in conjunction with our composite mount. It forms a compact assembly which is rugged and tolerant of heavy treatment

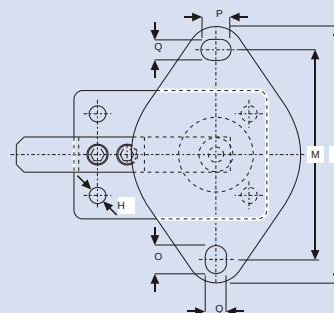
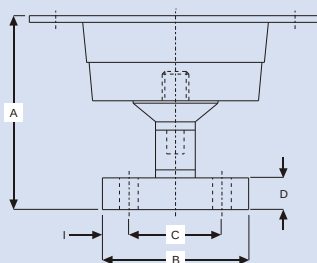
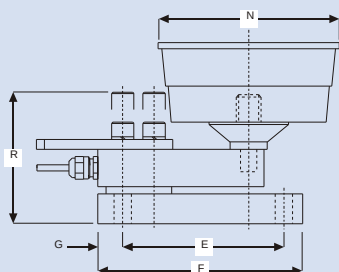
The composite mount supplies the required rigidity whilst retaining shock absorption capability. Complicated arrangements that often accompany conventional installations are avoided. Tedea-Huntleigh's system for truck scales can be installed in a matter of hours instead of more than a day.

SHOCK MOUNTS/ANTI-VIBRATION MOUNTS

All measurements in mm.

Load Cell Type	355	3410/3510	220	220
Max. capacity (kg)	250	2000	5T/10T	20T/30T
A Height (Overall)	96	146	128	174
B Width	64	110	130	245
C Hole Centres	50	70		
D Plate Thickness	12	24	20	40
E Hole Centres	100	130		
F Length	120	165	151	245
G Hole Centre to Edge	10	20		
H Hole Diameter	8.5	14.0		
I Hole Centre to Edge	7	20		
J Shock Mount Diameter	72 max	-	125	
K Bolt Fixing Thread	M10	-		
L Total Width	-	220	125	
M Slot Centres	-	180		
N Diameter	-	146	125	
O Slot Length	-	24		
P Slot Length	-	26		
Q Slot Width	-	18		
R Min Clearance for Load Cell Removal	-	106		
Flange Thickness	-	5		

MODEL 3510/HSB SHOCKMOUNT



MODEL 355 SHOCKMOUNT

