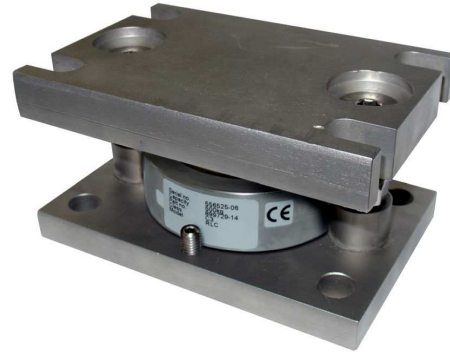


RLC Self-align Mounting Kit

FEATURES

- Capacities: 0.25–10T
- Hardened components at all load bearing surfaces
- Rocker pin load introduction
- Stainless steel construction
- Built-in horizontal movement control and lift-off protection
- Load cell (re)placement after installation of the mount



APPLICATIONS

- Process control
- Batch weighing
- Silo/hopper weighing
- Belt scale weighing

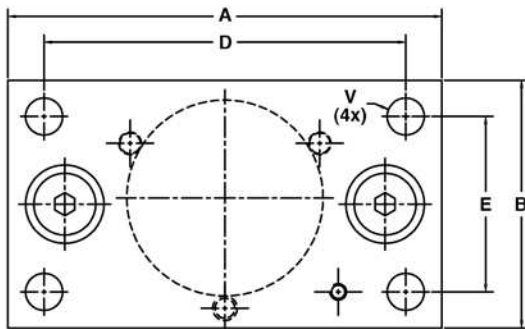
The RLC self-aligning foot assembly is an ideal solution for medium capacity platform scales and belt scale applications.

DESCRIPTION

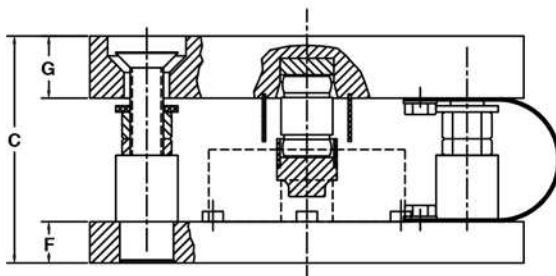
The RLC self-aligning silo mount, combined with the RLC load cell family, provides weighing assemblies suitable for process control, batch weighing, silo/hoppers, and belt scale applications.

The RLC mount and foot are based on a rocker pin design, combining excellent load introduction to the transducer with an overall low profile. Hardened stainless steel components are used at all bearing surfaces. The fully stainless steel construction guarantees long term reliability, even in the harshest environments.

OUTLINE DIMENSIONS in millimeters



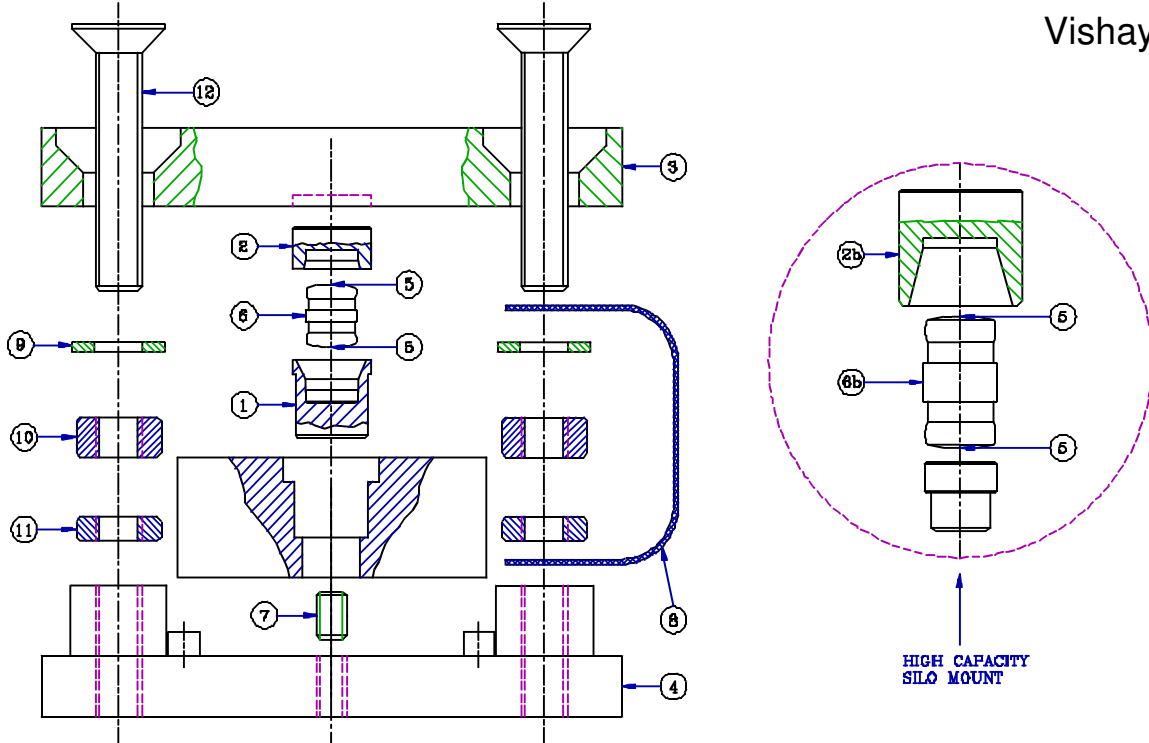
	RLC-SM-01	RLC-SM-02	RLC-SM-03
CAPACITY	0.5T, 1T	2T, 3.5T, 5T	10T, 13T
A	150	160	210
B	100	110	120
C	75	100	110
D	120	120	175
E	70	70	85
F	15	20	20
G	20	20	30
V	∅13	∅16	∅18



ASSEMBLY / MONTAGE / ENSEMBLE:

Mod. RLC SILO MOUNT

Vishay Revere



899043-00: 0.5, 1, 2t		
Item	Description / Quantity Bauteil / Anzahl Description / Quantité	
1	Lower bearing Unterer Druckkörper Palier inférieur	1
2	Upper Bearing Oberer Druckkörper Palier supérieur	1
3	Top plate Kopfplatte Plaque supérieure	1
4	Base plate Grundplatte Plaque de base	1
5	High pressure grease Hochleistungsfett Graisse haute pression	
6	Rocker pin Rocker Pin Axe rotule	1
7	M8x20 Hex.Sock.Set Scr. SS A2 Gewindestift M8x20 VA Vis 6-pans creux inox M8x20	1
8	Earth Cable Erdungsband Tresse de masse	1
9	M12 Washer SS A2 Scheibe für M12 VA Rondelle-inox M12 A2	2
10	M12 Hex. Nut SS A2 Sechskant-Mutter M12 VA Ecrou Hex-inox M12 A2	2
11	M12 Thin Hex. Nut SS A2 Sechskant-Mutter M12 VA flache Ausführung Contre-écrou inox M12 A2	2
12	M12x60 Hex.Sock.H. Counter Sunk Screw SS A2 Senkschraube M12x60 VA Vis tête fraisée-6-pans creux-inox M12x60	2

899045-00: 2, 3.5, 5t		
Item	Description / Quantity Bauteil / Anzahl Description / Quantité	
	Lower bearing included in load cell package Unterer Druckkörper (im Lieferumfang der Wäge- zelle enthalten) Palier inférieur compris dans le montage complet	1
2b	Upper bearing Oberer Druckkörper Palier supérieur	1
3	Top plate Kopfplatte Plaque supérieure	1
4	Base plate Grundplatte Plaque de base	1
5	High pressure grease Hochleistungsfett Graisse haute pression	
6b	Rocker pin Rocker Pin Axe rotule	1
7	M12x25 Hex.Sock.Set Scr. SS A2 Gewindestift M12x25 VA Vis 6-pans creux inox M12x25	1
8	Earth cable Erdungsband Tresse de masse	1
9	M16 Washer SS A2 Scheibe für M16 VA Rondelle-inox M16 A2	2
10	M16 Hex. Nut SS A2 Sechskant-Mutter M16 VA Ecrou Hex-inox M16 A2	2
11	M16 Thin Hex.Nut SS A2 Sechskant-Mutter M16 VA flache Ausführung Contre-écrou inox M16 A2	2
12	M16x70 Hex.Sock.H. Counter Sunk Screw SS A2 Senkschraube M16x70 VA Vis tête fraisée-6-pans creux-inox M16x70	2

Self-Aligning Mount

The stainless steel RLC mount tolerates controlled movement in all directions. The silo or hopper is held captive, eliminating the need, unless major load movement is anticipated, for additional check rods. The unique design allows the load cell to be placed or replaced after installation of the mount.



ACCESSORIES

Non-Adjustable Foot

The non-adjustable, stainless steel foot carries the same specifications as the height adjustable version, while providing an even lower profile.



Height-Adjustable Foot

This stainless steel foot, which has 5 mm of height adjustment, provides excellent load introduction to the load cell. The foot allows flexibility in platform design without compromising overall system performance.



ADDITIONAL INFORMATION			
MOUNT/FOOT	0.25-1T	2-5T	10T-13T
Self-aligning mount			
Height, mount assembly + RLC (mm)	75	100	110
Outline drawing	899043-00	899045-00	499094-10
Mount assembly guideline	AG 05/7-100/01	AG 05/7-100/01	-
Non-adjustable foot			
Height of non-adjustable foot + RLC (mm)	50	85.2	-
Outline drawing non-adjustable foot	899041-00	899042-00	-
Height-adjustable foot			
Height of adjustable foot + RLC (mm)	60+5	92.6+5	120.2+5
Outline drawing adjustable foot	499083-00	499084-00	499093-00